

HANDBOOK FOR ERASMUS+ INTERNATIONAL STUDENTS



UNIVERSITY
OF ŽILINA



Erasmus+

CONTENTS

BEFORE ARRIVAL

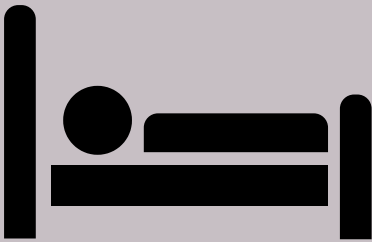
WELCOME →

TRANSPORT

VISAS

FOREIGN POLICE

ACCOMMODATION



DORMITORY VEĽKÝ DIEL
DORMITORY HLINÝ

STUDENT CARD

CATERING

SPORT ACTIVITIES

HEALTH CARE FOR STUDENTS

EDIS SHOP

SLOVAK LANGUAGES

CONTACT DETAILS



BEFORE ARRIVAL

TRANSPORT

VISAS

FOREIGN POLICE

WHO HOW WHAT
WHEN ? WHY
WHERE



BEFORE ARRIVAL

TRANSPORT

Convenient connection to the Žilina from the nearest an airport:

● VIENNA

From the airport in Vienna you can easily get to the capital of Slovakia - Bratislava by bus.



Route from Vienna airport to the bus station Bratislava Nivy. You can use 3 shipping companies. Flixbus, Slovak Lines and RegioJet. You can find their current timetable.

From the railway station (Hlavná stanica) you can take the train directly to Žilina.

● PRAGUE



From the airport you can get to the bus and train station by bus.

From there you can use the bus or train to get to Žilina. Timelines can be found on connected lines.

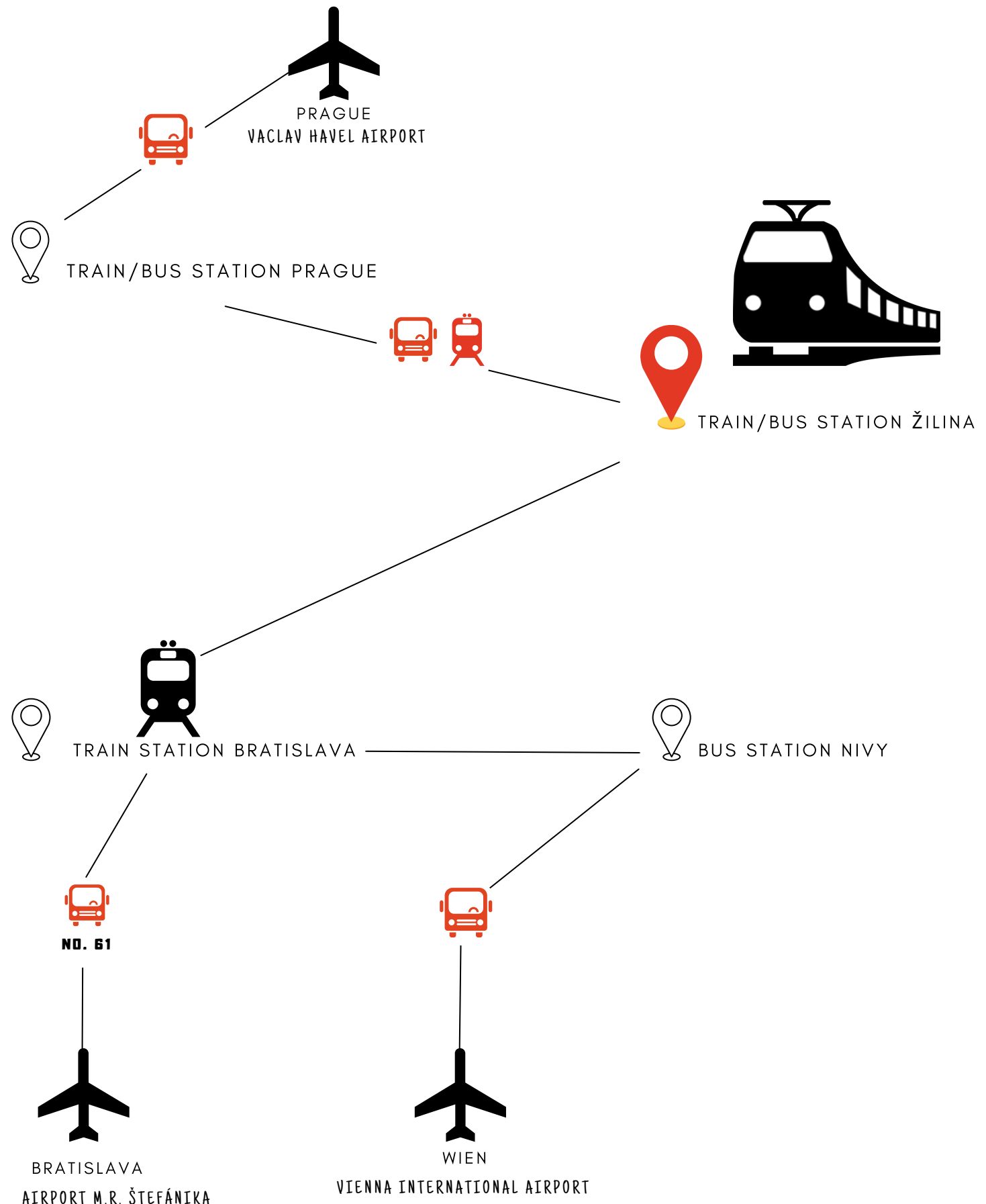
● BRATISLAVA



From there you can use the bus or train to get to Žilina. Timelines can be found on connected lines.



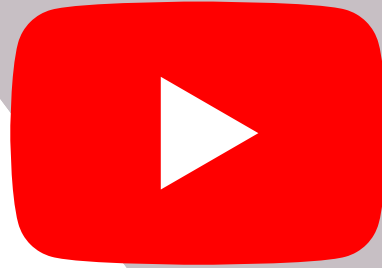
Transport map



Getting around in Žilina

UNIZA campus tour

watch the video on how to get to the campus and also what parts it consists of.



KIA bike



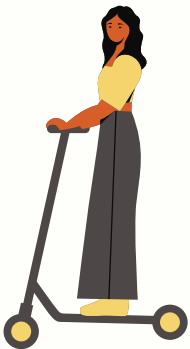
1 Download app



2 Bike rental

3 Pricing

BOLT electric scooter



Electric scooters offer you another way to move. Which, they are spread all over the city. More information can find here <https://bolt.eu/en/scooters/>



Find a ride

Find a scooter on the street or using the map in your Bolt app



Unlock with the app



Follow safety rules



Park with care

Taxi



Taxi operates 24 hours a day and prices are comparable to other cities in Europe. Usually start at 3€ in the town and depend of the finish locality.

Getting around in Žilina

Trolleybus

Žilina has an efficient public transport system that includes buses and trolleybuses with a wide coverage area and a frequency of 24 hours a day.

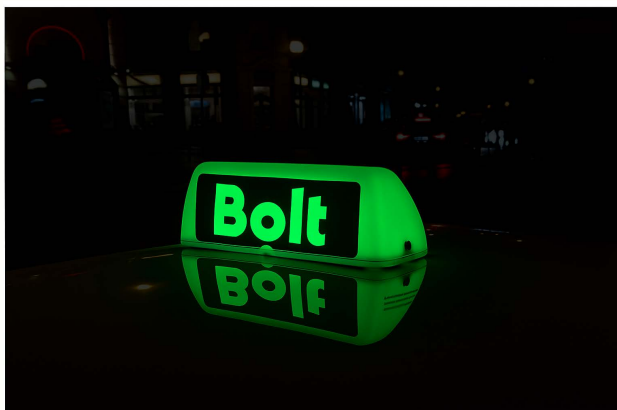
1 TICKETS

Tickets are available in the ticket machines at the bus stops, in the bus via card and also in the newspaper kiosks. Ticket machines accept € coins.

2 SMS TICKETS

You can buy ticket via a mobile phone as well. For purchasing the ticket send a blank sms to number 1155.

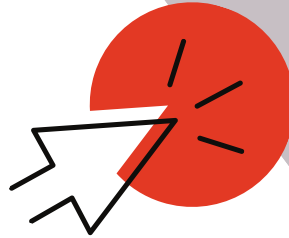
You may enter the vehicle only with the received confirmation SMS message!



BEFORE ARRIVAL

NATIONAL VISA Typ D

If you are a student who comes from non-EU countries, you need to have an approved visa before coming to Slovakia. If you are not sure if you need visa you can check it here.



National visa (long-stay visa D)

The visa can be issued **ONLY** for a stay longer than 90 days, however, for a maximum of one year.

If you are an EU citizen, you can stay in Slovak for 90 days with a valid passport or ID. If you stay longer than 90 days, you must register with the Foreign Police.



BEFORE ARRIVAL

CENTRES FOR FOREIGNERS' SERVICES

International students in Slovakia can receive free support with residence permits, integration, and everyday matters from the Centres for Foreigners' Services. These centres operate in several regions and offer assistance in multiple languages.



The centres are intended for:

International students

Highly qualified workers and their family members

Returnees (citizens of the Slovak Republic returning from abroad) and their family members

They provide individual advice and assistance in the following main areas:

Residence matters: Support with submitting applications for granting, extending, or changing the purpose of residence

Employment: Information on legal employment opportunities, working conditions, and navigating the labor market

Social integration: Advice on housing, education, healthcare, and other aspects of daily life

Navigation in the public service system: Help with contacting authorities, public institutions, and relevant organizations



Where can you find these centres?

The Centres for Foreigners' Services currently operate at the Foreigners' Police Departments in the following cities and you can visit them in person:

Bratislava - Regrútska 4, 831 07 Bratislava

Žilina - Janka Kráľa 4, 010 40 Žilina

Košice - Trieda SNP 35, 040 01 Košice

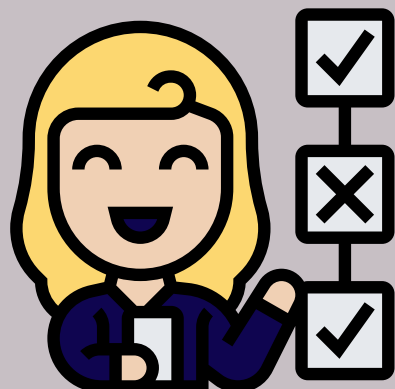


Opening hours:

Mon	07.30 - 15.30
Tue	07.30 - 15.30
Wed	07.30 - 15.30
Thu	07.30 - 15.30
Fri	07.30 - 15.30

E-mail: csc@minv.sk

Phone: +421961570333



ACCOMMODATION

The university of Žilina provide accommodation facilities for all incoming students. The university has two accomodation facilities, Veľký diel and Hliny. The place, where you will accommodated depend of the faculty where you are going to study.

DORMITORY VEĽKÝ DIEĽ

Dormitory VEĽKÝ DIEĽ are for students from:

- Faculty of Mechanical Engineering
- Faculty of Electrical Engineering and Information Technologies
- Faculty of Management Science and Informatics



Veľký diel
Vysokoškolákov 20
010 08 Žilina
Block DG
Recepcia: +421 041 513 1426



- The nearest bus stop is called "Internátna" on bus link 30
- About 10 minutes on foot from accommodation is bus stop "Obchodná", through which there are public transport lines no. 1, 4, 5, 6, 7, 14, 20 and 50 (night link).



www.vd.internaty.sk
www.iklub.sk



Accommodation rules



DORMITORY VEĽKÝ DIEL



All rooms are located in the Block DG

- Room occupied by 3 students

- Fees

€ 120 € - 196 € per person/month

The price depends on the number of students in the room

payment by bank transfer or cash



€ Electrical equipment

25 € per person/semester - paid by cash



- Payment

€ must be paid to the account at least 3rd day of month

€ Bank information

Variable symbol: 01593

Constant symbol: 0308

Specific symbol: ID student number

(for example: dd/mm/yyyy + in comment your name)

SWIFT code: SPSRSKBA

IBAN: SK45 8180 0000 0070 0018 2855



Students over 26 years have to pay city tax 2,50 EUR per day.



- Equipment

Internet access

Television room

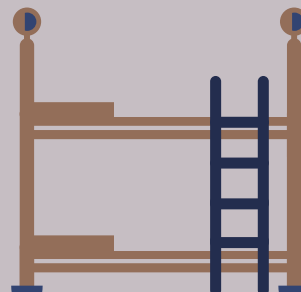
Cinema room

Study room

Laundry - self service

Kitchens

GP



DORMITORY HLINY

Dormitory HLINY are for students from:

- Faculty of Operation and Economics of Transport and Communications
- Faculty of Civil Engineering
- Faculty of Security Engineering
- Institute of Mediamatics and Cultural Heritage



Hliny V
Ul. Hlinská
010 54 Žilina

Block H5 and H3
Recepcia: +421 041 513 1477



www.hliny.internaty.sk
www.iklub.sk



Accommodation rules



- The nearest bus stop to the student accommodation facility Hliny is "Mostná" or "Hlinská", through which there are public transport lines no. 1, 4, 5, 6, 7, 14, 20 and 50 (night link).



DORMITORY HLINY



All rooms are located in the Block H5 and H3

- Room occupied by 2 or 3 students

- Fees

€ 95 € - 117 € per person/month

The price depends on the number of students in the room

payment by cash



€ Elektricitiy

if you consume will be over 60W per month. Price will be calculated according to the current price list.



- Equipment

Laundry - self service

Internet access

Television room

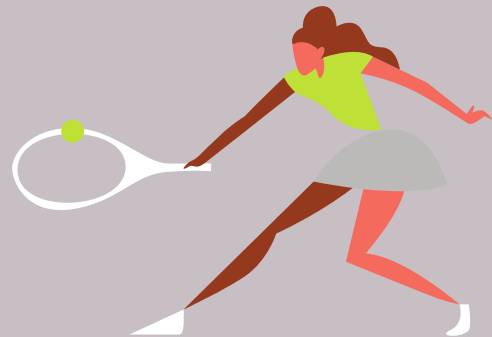
COPY - centre

Kitchens

Fit centre

- Courts

Students over 26 years have to pay city tax 2,50 EUR per day.



STUDENT CARD - ISIC

ISIC - International student identity card

This card provides:

- Proof of your study
- Replace a paper confirmation of attendance at school
- Discounts for bus, rail transport
- Access to the academic information system of the university
- Access your enter to the university or dormitory
- Access to order food from the university canteen



New!

How to proceed in getting a new card ?

1 Enrolment

The basic condition for issuing the card is an actual enrolment of a student in the relevant academic year in the system IS Vzdelávanie (it is realized by the study departments of faculties or your Erasmus+ coordinator).

2 Personal identification

Personal participation with the presentation of proof of identity (ID card, passport, driving licence) is required for issuing the card).

3 Photography

It is not necessary to bring a printed photo as we take a digital photo while you wait.

4 Payment of the fee

Fees are paid only via bank transfer.

5 Issuing the card

After fulfilling the conditions, we print the cards while you wait.

6 Activation

In accordance with the guidelines of the Ministry of Education, Science, Research and Sport of the Slovak Republic, we upload the holder's personal data to a card memory through the university terminal.

Problems ?



+421 41 513 1715



karty@uniza.sk



ground floor
of the
Rectorate -
AA018

CATERING

The catering services are provided

Monday to Thursday 7 a.m. - 6 p.m.

Friday 7 a.m. - 2:30 p.m.

Weekend 11 a.m. - 1 p.m.

OPEN

Meals are served in canteens or snack bars

Nová Menza

Old Menza

Café Rectorate

Faculty of Management and Informatics

Faculty of Safety Engineering

Bufet internáty - blok EF

Buffet building AR



Charge your student card



Money on your student card can top up at the cash desk or at some centers directly at the service staff.

Cash automat is in Nová canteen, Old canteen, Buffer, block on dormitory DE-DF and buffet building AR. Recharging credit with service staff is possible at other centers.

The prices in the canteen are around 2.00 € to 3.90 € with an ISIC card.



Instruction for signing for ordering

ORDER HERE



Daily menu @menzazilina



SPORT ACTIVITIES

You, as a student have a chance to participate in sport activities which are provided through the Institute of Physical Education UNIZA. We are offering almost 30 kinds of sports.

Basketball

Volleyball

Squash

Cross fit

Futsal

Ice Hockey

Table tennis

Jumping

Frolball

Benbinton

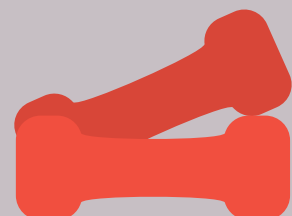
Tennis

Pilates

and more you will find here.



GYM



HEALTH CARE FOR STUDENTS



European Health Insurance Card

Free card that gives you access to medically necessary, state-provided healthcare during a temporary stay in any of the 27 EU countries, Iceland, Liechtenstein, Norway and Switzerland under the same conditions and at the same cost (free in some countries) as people insured in that country.

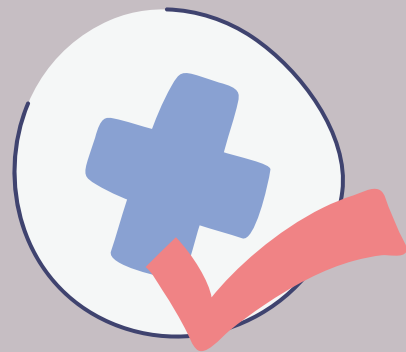
- is not an alternative to travel insurance. It does not cover any private healthcare or costs such as a return flight to your home country or lost/stolen property,
- does not cover your costs if you are travelling for the express purpose of obtaining medical treatment,
- does not guarantee free services. As each country's healthcare system is different services that cost nothing at home might not be free in another country.



HEALTH CARE FOR STUDENTS

Travel Insurance

Travel insurance abroad covers expenses incurred for emergency medical care provided in a public or private medical facility. However, it also includes extra services. You can insure your luggage, permanent consequences of an accident and death as a result of an accident, liability for damage, cancellation of a trip, early return or immovable motor vehicle. It's up to you what insurance you take out and for how long. The travel insurance may provide your national travel insurance company or you can use the ERAPO.



Doctor



MUDr. Daniela Podolinská, s.r.o.

Vysokoškolákov 31 (ŽILPO, on the ground floor)

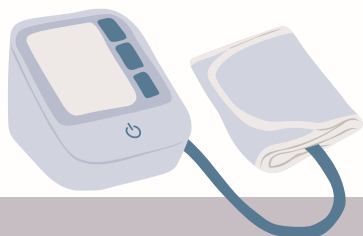
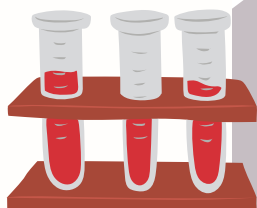
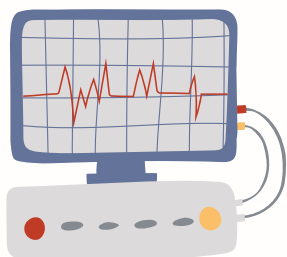
010 08 Žilina



Monday - Friday 7 a.m. - 12:30 a.m.



+421 41 562 7035



HEALTH CARE FOR STUDENTS



HOSPITAL

In Žilina is situated Faculty Hospital Žilina. This hospital has an Accident and Emergency department and also many specialized clinics.



EMERGENCY



Ul. Vojtecha Spanyola 43, 012 07 Žilina

see here with the transport information



2€ for you if you have a EHIC

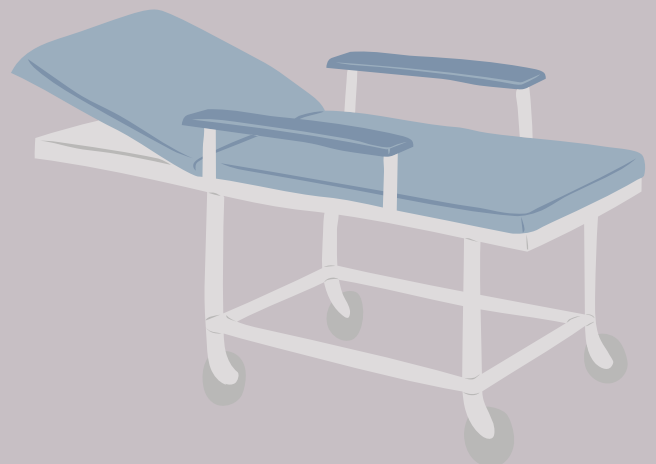
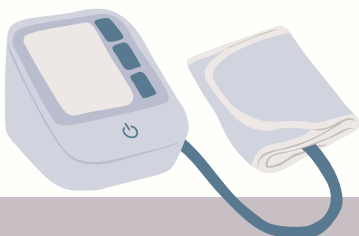
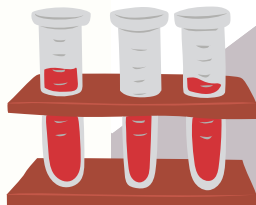
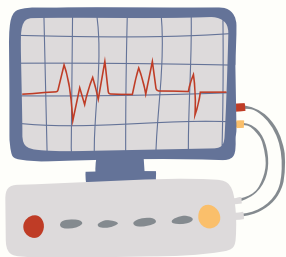


In case, that you will need emergency contact your buddy as well for sure that he/she can be your translator.



DENTIST

Vysokoškolská 22, 010 08 Žilina



EDIS SHOP

The Edis store is located in the main building of the university - at the Rector's Office. You will find it on the left when you enter the building. There are promotional materials of the University of Žilina and faculties. You can buy university branded gifts, hoodies, t-shirts, pens and much more.



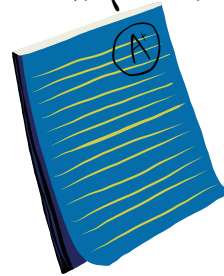
Monday: 08:00 - 11:30 a 12:30 - 15:00 hod.
Tuesday: 08:00 - 11:30 a 12:30 - 15:00 hod.
Wednesday: 08:00 - 11:30 a 12:30 - 15:00 hod.
Thursday: 08:00 - 11:30 a 12:30 - 15:00 hod.
Friday: 08:00 - 11:30 a 12:30 - 15:00 hod.



SLOVAK LANGUAGES

The objective of Slovak language course for Erasmus students is to provide students with:

- handle basic communication skills in everyday life situations as well as at university.
- present Slovakia as a country some classes will be taught in venues other than university campus (Stanica Zarietie, Artforum bookstore, Budatin Castle, Strečno castle - to be specified later according to availability).
- to be helpful to you with orientation both at the university as well as in the city of Žilina, to assist you with socialization, to solve practical problems which can arise.



EXAM REQUIREMENTS

final test (min 60%) + oral exam (syllabus corresponding to the conversational topics).

You will be awarded 3 ECTS credits after successful completion of the course.



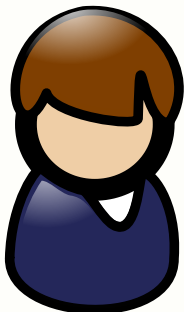
CONTACT DETAILS

The University of Žilina annually welcomes foreign students for one or two semester study stays within the Erasmus Programme.

The admission of foreign students for study stays is handled by Faculty Erasmus coordinator and the International Office staff, whose are responsible for entire coordination and communication with students.



Faculty Erasmus Exchange contact



International Relations and Marketing Office
Erasmus Coordinator for Incoming Students



Incoming@uniza.sk



+421 415 135 149

Welcome to UNIZA
explore, learn, and enjoy every moment!