

# HANDBOOK FOR ERASMUS+ INTERNATIONAL STUDENTS



UNIVERSITY  
OF ŽILINA



Erasmus+

# CONTENTS

**BEFORE ARRIVAL**

**WELCOME** →

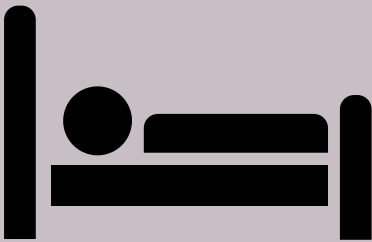
**TRANSPORT**

**VISAS**

**FOREIGN POLICE**

**TEMPORARY RESIDENCE  
PERMIT**

**ACCOMMODATION**



**DORMITORY VEĽKÝ DIEL  
DORMITORY HLINÝ**

**STUDENT CARD**

**CATERING**

**SPORT ACTIVITIES**

**HEALTH CARE FOR STUDENTS**

**EDIS SHOP**

**SLOVAK LANGUAGES**

**COVID-19 INFORMATION**

**CONTACT DETAILS**



# BEFORE ARRIVAL

TRANSPORT

VISAS

FOREIGN POLICE

TEMPORARY RESIDENCE PERMIT

WHO  
WHEN  
WHERE  
HOW  
WHAT  
WHY



# BEFORE ARRIVAL

## TRANSPORT

Convenient connection to the Žilina from the nearest an airport:

### ● VIENNA

From the airport in Vienna you can easily get to the capital of Slovakia - Bratislava by bus.



Route from Vienna airport to the bus station Bratislava Nivy. You can use 3 shipping companies. Flixbus, Slovak Lines and RegioJet. You can find their current timetable.

The last stop is BA Mlynské Nivy/BUS Station. From where you take bus number 40.

From the railway station (Hlavná stanica) you can take the train directly to Žilina.

### ● PRAGUE



From the airport you can get to the bus and train station by bus, you can find the numbers by bus here.

From there you can use the bus or train to get to Žilina. Timelines can be found on connected lines.

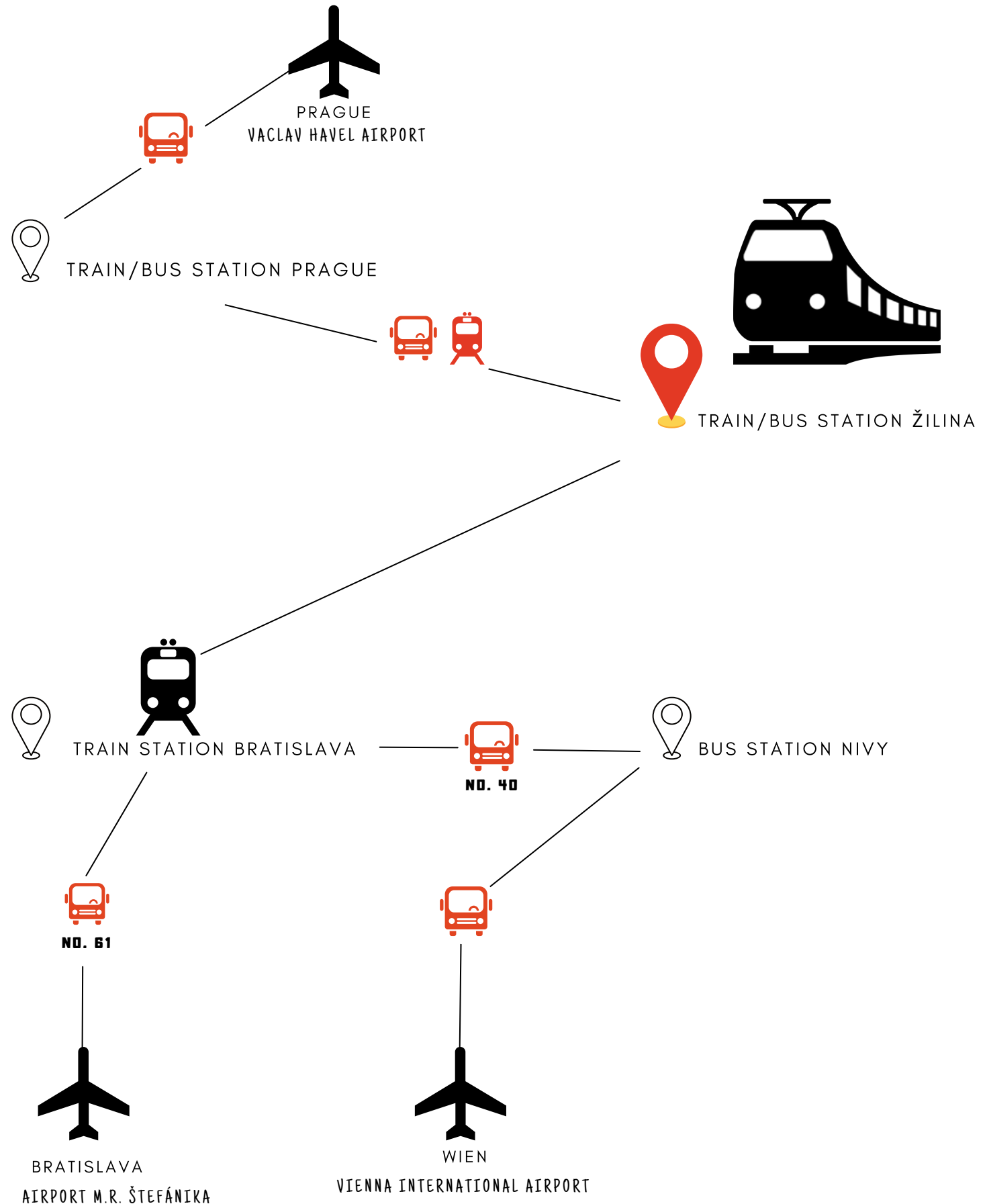
### ● BRATISLAVA



From there you can use the bus or train to get to Žilina. Timelines can be found on connected lines.



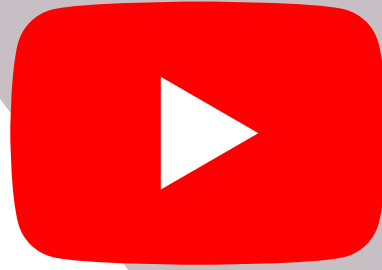
# Transport map



# Getting around in Žilina


## UNIZA campus tour

watch the video on how to get to the campus and also what parts it consists of.

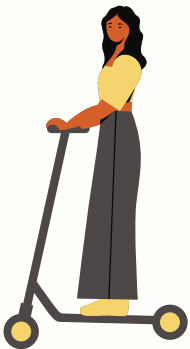


## KIA bike







- 1 Download app 
- 2 30 minutes for FREE  
After 30 minutes the bike has to be returned to an official bike station.
- 3 20€ for additional hours but max 100€/24 hours  
The pricing list you can find here <https://bikekia.sk/en/pricing/>
- 4 Look how it works  
<https://bikekia.sk/en/how-it-works/>

## BOLT electric scooter



Electric scooters offer you another way to move. Which, they are spread all over the city. More information can find here <https://bolt.eu/en/scooters/>

- 1  Find a ride  
Find a scooter on the street or using the map in your Bolt app
- 2  Unlock with the app
- 3  Follow safety rules
- 4  Park with care

## Taxi



Taxi operates 24 hours a day and prices are comparable to other cities in Europe. Usually start at 3€ in the town and depend of the finish locality.

# Getting around in Žilina

## Trolleybus

Žilina has an efficient public transport system that includes buses and trolleybuses with a wide coverage area and a frequency of 24 hours a day.



### 1 TICKETS

Tickets are available in the ticket machines at the bus stops, and also in the newspaper kiosks. Ticket machines accept € coins.

60 min	1 €	60 min - Discounted	0,70 €	For students up to 26.
12 min	0,90 €	12 min - Discounted	0,60 €	

### 2 SMS TICKETS

You can buy ticket via a mobile phone as well. For purchasing the ticket send a blank sms to number 1155.

The price of the ticket is 1.30 € and its validity for 60 minutes.

You may enter the vehicle only with the received confirmation SMS message!



# BEFORE ARRIVAL

## VISAS

If you are a student who comes from non-EU countries, you need to have an approved visa before coming to Slovakia. If you are not sure if you need visa you can check it here.



You can use the Guide to administrative duties - Entry and stay in Slovakia where you will gradually learn all the essentials you need to obtain a visa.

If you are an EU citizen, you can stay in Slovak for 90 days with a valid passport or ID. If you stay longer than 90 days, you must register with the Foreign Police and apply for a temporary stay in our country.





# BEFORE ARRIVAL

## TEMPORARY RESIDENCE PERMIT

Students from third countries and those who compile in Slovakia for more than 90 days must apply for a temporary stay for the purpose of studies. The complete application consists of:

### Application



#### BOOK YOUR AN APPOINTMENT

You can book an appointment through the online registration formular which you can find here. If it is possible complete your registration just before your arrival.



Bring TWO recent FULL-FACE PHOTOGRAPHS 3 X 3,5 CM.



VALID PASSPORT



DOCUMENT PROVING THE PURPOSE OF YOUR STAY

A confirmation of studies letter from the university with round stamp. Not older than 90 days.



DOCUMENT PROVING FINANCIAL COVERAGE

Bank account statement, letter declaration that you have recived Erasmus grant and it must be certified by notarial act. Not older than 90 days.

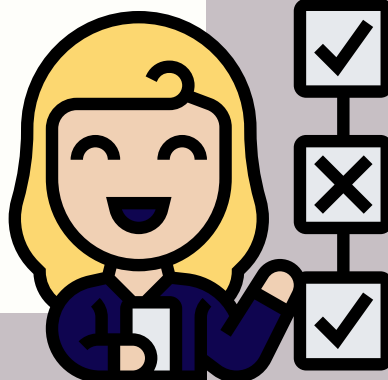


CRIMINAL RECORD EXTRACT (APPOSTILLED)

from your country of origin transtated to Slovak (transtation must be done by the official translator). If the translation is done abroad, the competernce of the translator must be attested by the slovak embassy/consulate. Not older than 90 days.



ACCOMMODATION APPROVAL LETTER issued by dormitory.



# Temporary residence permit

## Important notes



- Each document issued in a language other than Slovak has to be translated to Slovak by an official translator.
- The information as name, DOB, ... has to be exactly the same as in the passport !
- Fee for the resident card is 4,50 €.
- Once you are granted a temporary residence, you are obliged to submit a medical certificate within 30 days from the collection of your residence card. Certificate can not be older than 30 days.
- Start the procedure as soon as possible. You can apply for an appointment before you arrive on Slovakia. The schedule system organize meeting cca 1 month later. So you will have a lot of time for completion of all documents.



### Office hours

Monday 7:30 - 15:30  
Wednesday 7:30 - 15:30  
Friday 7:30 - 15:30



+421-96140-3205, +421-96140-32164



# ACCOMMODATION

The university of Žilina provide accommodation facilities for all incoming students. The university has two accommodation facilities, Veľký diel and Hliny. The place, where you will be accommodated depends on the faculty where you are going to study.

## DORMITORY VEĽKÝ DIEĽ

Dormitory VEĽKÝ DIEĽ are for students from:

- Faculty of Mechanical Engineering
- Faculty of Electrical Engineering and Information Technologies
- Faculty of Management Science and Informatics



Veľký diel  
Vysokoškolská 20  
010 08 Žilina  
Block DG  
Recepcia: +421 041 513 1426



- The nearest bus stop is called "Internátna" on bus line 30
- About 10 minutes on foot from accommodation is bus stop "Obchodná", through which there are public transport lines no. 1, 4, 5, 6, 7, 14, 20 and 50 (night link).



[www.vd.internaty.sk](http://www.vd.internaty.sk)  
[www.iklub.sk](http://www.iklub.sk)





Accommodation rules



# DORMITORY VEĹKÝ DIEL




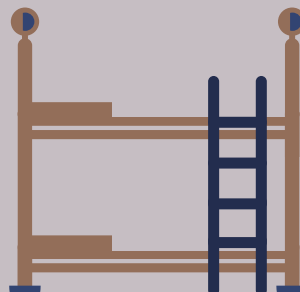
All rooms are located in the Block DG

- Room occupied by 3 students
- Fees
  - € 110€ - 150€ per person/month
  - The price depends on the number of students in the room
  - payment by bank transfer or cash 
- Electrical equipment
  - € 25 € per person/semester - paid by cash 
- Payment
  - € must be paid to the account at least 3<sup>rd</sup> day of month
  - € Bank information
    - Variable symbol: 01593
    - Constant symbol: 0308
    - Specific symbol: ID student number (for example: dd/mm/yyyy + in comment your name)
    - SWIFT code: SPSRSKBA
    - IBAN: SK45 8180 0000 0070 0028 2855

- Equipment
  - Internet access
  - Television room
  - Cinema room
  - Study room
  - Laundry - self service
  - Kitchens
  - GP



If you have a special accommodation request (e.g. a roommate, you want to be in the room alone), please let us know before arrival. 



# DORMITORY HLINY

Dormitory HLINY are for students from:

- Faculty of Operation and Economics of Transport and Communications
- Faculty of Civil Engineering
- Faculty of Security Engineering
- Faculty of Humanities



Hliny V  
Ul. Hlinská  
010 54 Žilina

Block H5 and H3  
Recepcia: +421 041 513 1477



- The nearest bus stop to the student accommodation facility Hliny is "Mostná" or "Hlinská", through which there are public transport lines no. 1, 4, 5, 6, 7, 14, 20 and 50 (night link).



[www.hliny.internaty.sk](http://www.hliny.internaty.sk)  
[www.iklub.sk](http://www.iklub.sk)



Accommodation rules



# DORMITORY HLINY




All rooms are located in the Block H5 and H3


- Room occupied by 2 or 3 students

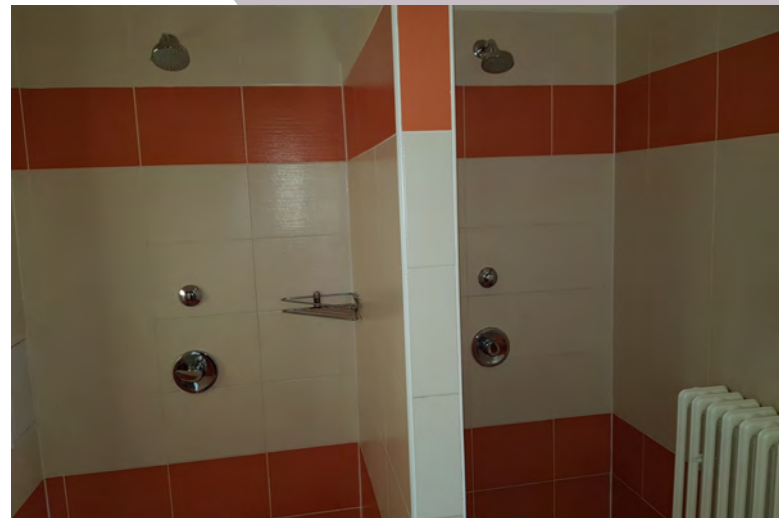
- Fees

€ 80€ - 100€ per person/month

The price depends on the number of students in the room  
payment by cash 

€ Elektricitiy

if you consume will be over 60W per month. Price will be calculated according to the current price list. 




- Equipment

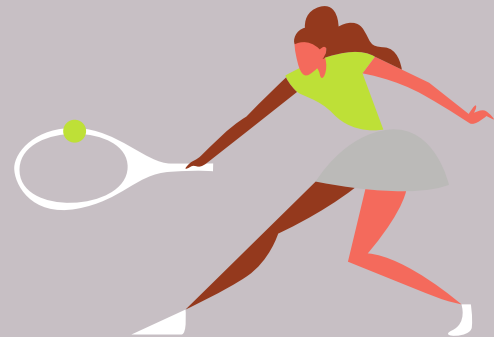
Laundry - self service  
Internet access  
Television room  
COPY - centre

Kitchens  
Fit centre

- Courts



If you have a special accommodation request (e.g. a roommate, you want to be in the room alone), please let us know before arrival. 



# STUDENT CARD - ISIC

## ISIC - International student indetity card

This card provides:

- Proof of your study
- Replace a paper confirmation of attendance at school
- Discounts for bus, rail transport
- Access to the academic information system of the university
- Access your enter to the university or dormitory
- Access to order food from the university canteen



How to proceed in getting a new card ?

### 1 Enrolment

The basic condition for issuing the card is an actual enrolment of a student in the relevant academic year in the system IS Vzdelávanie (it is realized by the study departments of faculties or your Erasmus coordinator).

### 2 Personal identification

Personal participation with the presentation of proof of identity (ID card, passport, driving licence) is required for issuing the card).

### 3 Photography

It is not necessary to bring a printed photo as we take a digital photo while you wait.

### 4 Payment of the fee

Fees are paid only via bank transfer.

### 5 Issuing the card

After fulfilling the conditions, we print the cards while you wait.

### 6 Activation

In accordance with the guidelines of the Ministry of Education, Science, Research and Sport of the Slovak Republic, we upload the holder's personal data to a card memory through the university terminal.

Problems ?



+421 41 513 1715



karty@uniza.sk



ground floor  
of the  
Rectorate -  
AA018

# CATERING

The catering services are provided

Monday to Thursday 7 a.m. - 6 p.m.

Friday 7 a.m. - 2:30 p.m.

Weekend 11 a.m. - 1 p.m.



Meals are served in canteens or snack bars

Nová Menza

Old Menza

Café Rectorate

Faculty of Management and Informatics

Faculty of Safety Engineering

Bufet internáty - blok EF

Buffet building AR



Charge your student card

Money on your student card can top up at the cash desk or at some centers directly at the service staff.

Cash automat is in Nová canteen, Old canteen, Buffer, block on dormitory DE-DF and buffet building AR. Recharging credit with service staff is possible at other centers.

The prices in the canteen are around 2.00 € to 3.90 € with an ISIC card.



Instruction for signing for ordering

ORDER HERE



Daily menu @menzazilina





# SPORT ACTIVITIES

You, as a student have a chance to participate in sport activities which are provided through the Institute of Physical Education UNIZA. We are offering almost 30 kinds of sports.

Basketball

Volleyball

Squash

Cross fit

Futsal

Ice Hockey

Table tennis

Jumping

Frolball

Benbinton

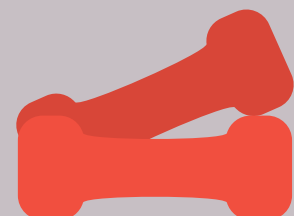
Tennis

Pilates

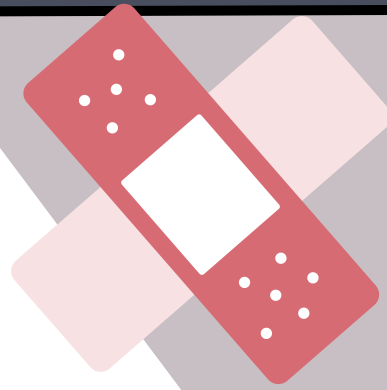
and more you will find here.



GYM



# HEALTH CARE FOR STUDENTS



## European Health Insurance Card

Free card that gives you access to medically necessary, state-provided healthcare during a temporary stay in any of the 27 EU countries, Iceland, Liechtenstein, Norway and Switzerland under the same conditions and at the same cost (free in some countries) as people insured in that country.

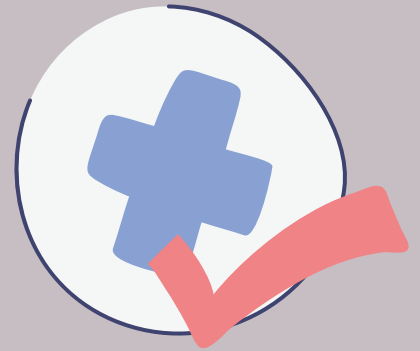
- is not an alternative to travel insurance. It does not cover any private healthcare or costs such as a return flight to your home country or lost/stolen property,
- does not cover your costs if you are travelling for the express purpose of obtaining medical treatment,
- does not guarantee free services. As each country's healthcare system is different services that cost nothing at home might not be free in another country.



# HEALTH CARE FOR STUDENTS

## Travel Insurance

Travel insurance abroad covers expenses incurred for emergency medical care provided in a public or private medical facility. However, it also includes extra services. You can insure your luggage, permanent consequences of an accident and death as a result of an accident, liability for damage, cancellation of a trip, early return or immovable motor vehicle. It's up to you what insurance you take out and for how long. The travel insurance may provide your national travel insurance company or you can use the ERAPO.



## Doctor



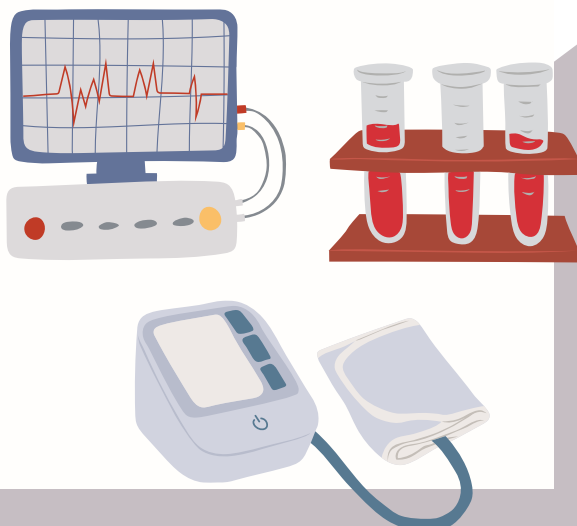
MUDr. Daniela Podolinská, s.r.o.

Vysokoškolákov 31 (ŽILPO, on the ground floor)

010 08 Žilina

Monday - Friday 7 a.m. - 12:30 a. m.

+421 41 562 7035




# HEALTH CARE FOR STUDENTS


## HOSPITAL


In Žilina is situated Faculty Hospital Žilina. This hospital has an Accident and Emergency department and also many specialized clinics.



### EMERGENCY

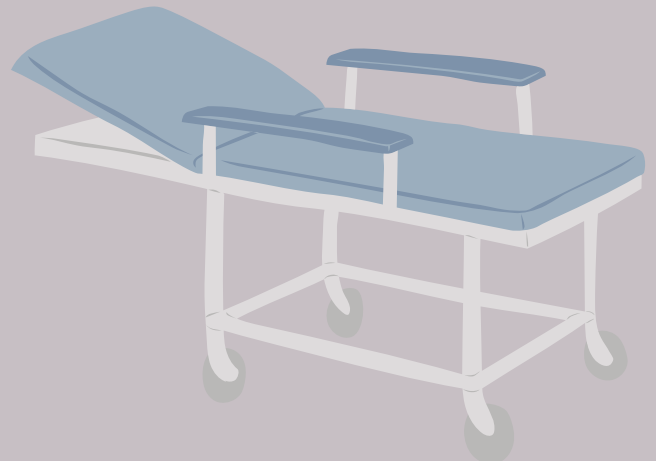
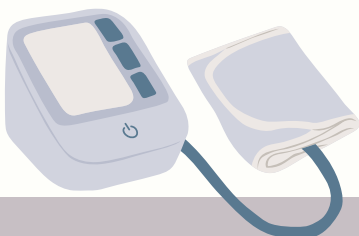
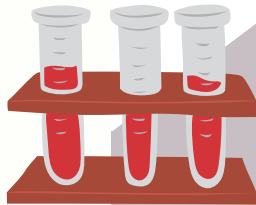
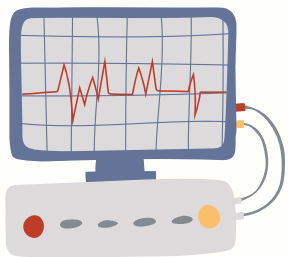
 Ul. Vojtecha Spanyola 43, 012 07 Žilina  
see here with the transport information

 2€ for you if you have a EHIC

 In case, that you will need emergency contact your buddy as well for sure that he/she can be your translator.

## DENTIST

Vysokoškolačkov 22, 010 08 Žilina



# EDIS SHOP

The Edis store is located in the main building of the university - at the Rector's Office. You will find it on the left when you enter the building. There are promotional materials of the University of Žilina and faculties. You can buy university branded gifts, hoodies, t-shirts, pens and much more.



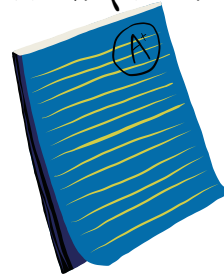
Monday: 08:00 - 11:30 a 12:30 - 15:00 hod.  
Tuesday: 08:00 - 11:30 a 12:30 - 15:00 hod.  
Wednesday: 08:00 - 11:30 a 12:30 - 15:00 hod.  
Thursday: 08:00 - 11:30 a 12:30 - 15:00 hod.  
Friday: 08:00 - 11:30 a 12:30 - 15:00 hod.



# SLOVAK LANGUAGES

The objective of Slovak language course for Erasmus students is to provide students with:

- handle basic communication skills in everyday life situations as well as at university.
- present Slovakia as a country some classes will be taught in venues other than university campus (Stanica Zarietie, Artforum bookstore, Budatin Castle, Strečno castle - to be specified later according to availability).
- to be helpful to you with orientation both at the university as well as in the city of Žilina, to assist you with socialization, to solve practical problems which can arise.



## EXAM REQUIREMENTS

final test (min 60%) + oral exam (syllabus corresponding to the conversational topics).

You will be awarded 3 ECTS credits after successful completion of the course.



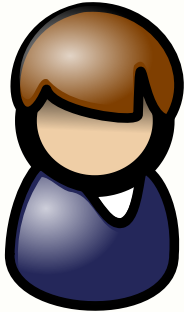
# CONTACT DETAILS

The University of Žilina annually welcomes foreign students for one or two semester study stays within the Erasmus Programme.

The admission of foreign students for study stays is handled by Faculty Erasmus coordinator and the International Office staff, whose are responsible for entire coordination and communication with students.



Faculty Erasmus Exchange contact



International Relations and Marketing Office  
Erasmus Coordinator for Incoming Students



[Incoming@uniza.sk](mailto:Incoming@uniza.sk)



+421 415 135 149

